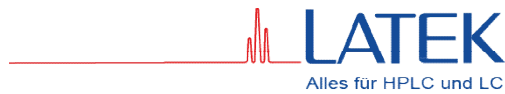


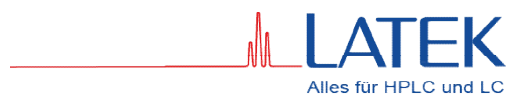
RHEODYNE Ersatzteil-Liste 2011



LATEK Labortechnik
Lilienthalstraße 13
69214 Eppelheim
Germany
Tel: +49 (0) 6221 760097
Fax: +49 (0) 6221 766479
Email: LATEK@t-online.de

Ersatzteil Nr.	Beschreibung	Preise
0241-007A	2/6 Man Inj, SS w/SS Bearing	a.A.
0241-071	TZ Rotor Seal for 7010-083	a.A.
0341-043	PEEK Stator for 9010-060	a.A.
0341-117	SS Stator for 7010 with MBB®	a.A.
0341-157	Parts for 7010-110	a.A.
0441-015	Knob Assy for 7000	a.A.
0441-079	SS Stator for 7010-121/122	a.A.
0441-117	VS Rotor Seal for 7010 w/TFE	a.A.
1001-999	RheBuild Kit for EV/RV100-101	a.A.
1005-999	RheBuild Kit for EV/RV100-105	a.A.
1006-999	RheBuild Kit for EV/RV100-106	a.A.
2102-999	RheBuild Kit for EV200-102	a.A.
2224-005	Stator Screw,PD/E7XX-X02,10/pk	a.A.
2244-009	Stator Screw,PD/E7X3-X00,10/pk	a.A.
2710-004	Cable,, RS232 DB9F-DB9F 3M	a.A.
2710-016	Cable Assembly,Sensor,Flow	a.A.
3000	2/6,Manual,SV,P,Peek	a.A.
3000-027	2/6,P,SB,PK	a.A.
3000-038	2/6 P,SV,SS	a.A.
3030	2/6,Manual,3WY,P,Peek	a.A.
3030-005	PK Rotor Seal for 3030	a.A.
3030-038	2/6,Manual,3WY,P,SS	a.A.
3055-010	PK Tubing, .125" x .062" x 10'	a.A.
3055-011	PK Tubing, .125" x .080" x 10'	a.A.
3055-018	2mL,Peek, Sample Loop, 1/8"	a.A.
3055-019	5mL,PK,Sample Loop,1/8"	a.A.
3055-023	10mL,PK,Sample Loop,1/8"	a.A.
3055-025	20mL,PK,Sample Loop, 1/8"	a.A.
3065-018	2mL,SS,Sample Loop, 1/8"	a.A.
3065-019	5mL,SS,Sample Loop, 1/8"	a.A.
3065-023	10mL,SS,Sample Loop,1/8"	a.A.
3065-025	20mL,SS,Sample Loop,1/8"	a.A.
3107-999	RheBuild Kit for RV310-107	a.A.
3300-088	Sensor,Flow,Microfluidic	a.A.
3501-999	RheBuild Kit for RV350-110	a.A.
3506-999	RheBuild Kit for RV350-106	a.A.
3710-008	PK Rotor Seal for 3000, 3710	a.A.
3725	2/6,Manual,SYR P,Peek	a.A.

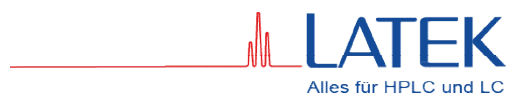
RHEODYNE Ersatzteil-Liste 2011



LATEK Labortechnik
Lilienthalstraße 13
69214 Eppelheim
Germany
Tel: +49 (0) 6221 760097
Fax: +49 (0) 6221 766479
Email: LATEK@t-online.de

Ersatzteil Nr.	Beschreibung	Preise
3725-006	PK Stator for 3000, 3725	a.A.
3725-018	PK Rotor Seal for 3725/3725i	a.A.
3725-038	2/6,SYR,SS	a.A.
3725-039	PK Stator Face Seal for 3725	a.A.
3725-056	Needle,16GA,Peek	a.A.
3725-085	SS Stator for 3725	a.A.
3725-086	Needle,16GA,SS	a.A.
3725-999	RheBuild Kit for 3725/3725-038	a.A.
3725I	2/6,MAN,SYR P,PK,w/Switch	a.A.
3725I-038	2/6,MAN,SYR P,SS,w/Switch	a.A.
4000-545	Parts for 7739-005	a.A.
4000-926	Bypass Loop,SS,30Deg	a.A.
4602-101	PCB,Driver,Pump,w/Feedback	a.A.
5100-999	RheBuild Kit for RV5x0-100	a.A.
5104-999	RheBuild Kit for RV5x0-104	a.A.
5123-027	Column Selector Control Cable	a.A.
5123-067	Cable,RS232 for EV	a.A.
5123-095	Power Cord North America	a.A.
5123-096	Power Cord Schucko (Europe)	a.A.
5123-111	Driver PCB for EV	a.A.
5804-500	PCB,Drvr,for LabPro,SW at 0	a.A.
5804-508	PCB,Drvr,Switch at 8	a.A.
5804-601	PCB,BCD,LabPro,Switch at 1	a.A.
6000-009	Washer,1/8",100Pkg.	a.A.
6000-047	Ferrule,PK,1/16",RheFlex,Bulk	a.A.
6000-048	RheFlex,PK,Short Nut, Bulk	a.A.
6000-051	Ferrule,PK,1/16",5/PK	a.A.
6000-054	Fittings,Sets,PK,1/16",5/Pkg	a.A.
6000-054BL	Fittings,Sets,PK,1/16",BL,5/PK	a.A.
6000-054GN	Fittings,Sets,PK,1/16",GN,5/PK	a.A.
6000-054GY	Fittings,Sets,PK,1/16",GY,5/PK	a.A.
6000-054RD	Fittings,Sets,PK,1/16",RD,5/PK	a.A.
6000-054WH	Fittings,Sets,PK,1/16",WH,5/PK	a.A.
6000-054YL	Fittings,Sets,PK,1/16",YL,5/PK	a.A.
6000-055	Fittings,PK,1/16",Short,5/PK	a.A.
6000-059	Fittings,PK,1/16",No Knob,5/PK	a.A.
6000-065	Tubing,PTFE,0.125OD,10Ft	a.A.
6000-066	Fittings,Set,PK,1/16",ELG	a.A.

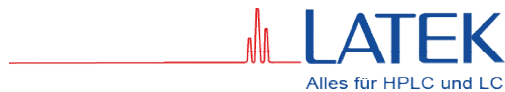
RHEODYNE Ersatzteil-Liste 2011



LATEK Labortechnik
Lilienthalstraße 13
69214 Eppelheim
Germany
Tel: +49 (0) 6221 760097
Fax: +49 (0) 6221 766479
Email: LATEK@t-online.de

Ersatzteil Nr.	Beschreibung	Preise
6000-066BL	Fittings,Set,PK,1/16",ELG,BL	a.A.
6000-066GN	Fittings,Set,PK,1/16",ELG,GN	a.A.
6000-066GY	Fittings,Set,PK,1/16",ELG,GY	a.A.
6000-066RD	Fittings,Set,PK,1/16",ELG,RD	a.A.
6000-066WH	Fittings,Set,PK,1/16",ELG,WH	a.A.
6000-066YL	Fittings,Set,PK,1/16",ELG,YL	a.A.
6000-076	Adapter,PK,1/8" to 1/16"	a.A.
6000-078	Fittings,Set,PK,1/8"	a.A.
6000-079	Ferrule,PK,1/8",5PK	a.A.
6000-082	Fittings,Set,SS,1/8",1/Pkg	a.A.
6000-083	Ferrule,SS,1/8",5/Pkg	a.A.
6000-090	Plug,PK,10-32,5/PK	a.A.
6000-109	Fittings,Set,SS,1/16"	a.A.
6000-110	Ferrule,SS,1/16",5/PK	a.A.
6000-111	Fittings,Set,SS,1/16",LG,5/Pkg	a.A.
6000-116	Fittings,SS,1/16",50/Pkg	a.A.
6000-117	Ferrule,SS,1/16",50/Pkg	a.A.
6000-118	Fittings,SS,1/16",LG,50/Pkg	a.A.
6000-119	Fittings,SS,1/16",ELG,50/Pkg	a.A.
6000-162	Fittings,SS,1/16",ELG,5/Pkg	a.A.
6000-209	Fittings,Set,SS,1/16",10/Pkg	a.A.
6000-210	Ferrule,SS,1/16",10/Pkg	a.A.
6000-211	Fittings,1/16,SS,LG,10/pkg	a.A.
6000-251	Ferrule,PK,1/16",10 Pieces	a.A.
6000-254	Fittings,Set,PK,1/16",10/Pkg	a.A.
6000-254BL	Fittings,Set,PK,1/16",BL,10/PK	a.A.
6000-254GN	Fittings,Set,PK,1/16",GN,10/PK	a.A.
6000-254GY	Fittings,Set,PK,1/16",GY,10/PK	a.A.
6000-254MC	Fittings,Set,PK,1/16",MC,10/PK	a.A.
6000-254RD	Fittings,Set,PK,1/16",RD,10/PK	a.A.
6000-254WH	Fittings,Set,PK,1/16",WH,10/PK	a.A.
6000-254YL	Fittings,Set,PK,1/16",YL,10/PK	a.A.
6000-255	Fittings,Set,PK,1/16",SH,10/PK	a.A.
6000-256	Ferrule,PK,1/16",50/PK	a.A.
6000-262	Fittings,Set,SS,1/16"ELG,10/Pk	a.A.
6000-263	Fittings,SS,1/16",10/pkg	a.A.
6000-264	Fittings,Set,SS,1/16",LG,10/Pk	a.A.
6000-265	Fittings,SS,1/16",ELG,10/Pkg	a.A.

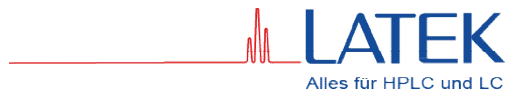
RHEODYNE Ersatzteil-Liste 2011



LATEK Labortechnik
Lilienthalstraße 13
69214 Eppelheim
Germany
Tel: +49 (0) 6221 760097
Fax: +49 (0) 6221 766479
Email: LATEK@t-online.de

Ersatzteil Nr.	Beschreibung	Preise
6000-282	Fittings,PK,1/16",OP,BLK10PCS,	a.A.
6000-282BL	Fittings,PK,1/16",OP,BL,10/PK	a.A.
6000-282GN	Fittings,PK,1/16",OP,GN,10/PK	a.A.
6000-282GY	Fittings,PK,1/16",OP,GY,10/PK	a.A.
6000-282MC	Fittings,PK,1/16",OP,MC,10/PK	a.A.
6000-282RD	Fittings,PK,1/16",OP,RD,10/PK	a.A.
6000-282WH	Fittings,PK,1/16",OP,WH,10/PK	a.A.
6000-282YL	Fittings,PK,1/16",OP,YL,10/PK	a.A.
6000-283	Knob,Chromtrac ID Kit, 20/PK	a.A.
6000-291	Fittings Set, PK,1/16",1/PK	a.A.
6000-312	Fittings,PK,1/16",OP,Bulk	a.A.
6000-312BL	Fittings,PK,1/16",OP,BL,Bulk	a.A.
6000-312GN	Fittings,PK,1/16",OP,GN,Bulk	a.A.
6000-312GY	Fittings,PK,1/16",OP,GY,Bulk	a.A.
6000-312RD	Fittings,PK,1/16",OP,RD,Bulk	a.A.
6000-312WH	Fittings,PK,1/16",OP,WH,Bulk	a.A.
6000-312YL	Fittings,PK,1/16",OP,YL,Bulk	a.A.
6000-337	PK M4 Micro Fitting, Bulk	a.A.
6000-338	PK M4 Micro Plug, Bulk	a.A.
6000-339	Fittings Kit,PEEK,M4 Micro	a.A.
6000-360	Fittings,RheFlex M4,10Pkg	a.A.
6000-361	Fittings,RheFlex M4,Plug,10Pkg	a.A.
6000-363	Knob,Chromtrc,Black,50/PKG	a.A.
6600-532	Body,Union,.010" ID	a.A.
7000	2/6 Manual,SV, SS	a.A.
7000-005	Fittings for 7000 Series	a.A.
7000-012	Parts for 7000 Series	a.A.
7000-016	VS Rotor Seal for 7000L	a.A.
7000-017	TZ Rotor Seal for 7000L Series	a.A.
7000-026	PK Stator for 7000 Series	a.A.
7000L	2/6 Manual,P,SS	a.A.
7004-999	RheBuild Kit for RV7x0-104	a.A.
7005-999	RheBuild Kit for EV7x0-105	a.A.
7010	2/6 MAN,INJ,SS	a.A.
7010-006	Bearing Ring	a.A.
7010-009	SS Nut, Bulk	a.A.
7010-010	SS Ferrule, Bulk	a.A.
7010-011	SS Long Nut, Bulk	a.A.

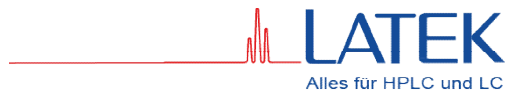
RHEODYNE Ersatzteil-Liste 2011



LATEK Labortechnik
Lilienthalstraße 13
69214 Eppelheim
Germany
Tel: +49 (0) 6221 760097
Fax: +49 (0) 6221 766479
Email: LATEK@t-online.de

Ersatzteil Nr.	Beschreibung	Preise
7010-015	Isolation Seal	a.A.
7010-032	Hex Key, 9/64	a.A.
7010-038	Shaft Assy for 7010	a.A.
7010-039	VS Rotor Seal for 7010	a.A.
7010-040	SS Stator for 7010/7125	a.A.
7010-041	Stator Ring for 7010	a.A.
7010-047	SS Fittings for 7010/7125	a.A.
7010-062	SS X-Long Nut, Bulk	a.A.
7010-069	SS Stator for 7000 Series	a.A.
7010-071	TZ Rotor Seal for 7010	a.A.
7010-077	SS Bearing Race for 7010	a.A.
7010-144	Stator Screw,7010/7125,10/pkg	a.A.
7010-154	Bearing Kit for 7010	a.A.
7010-160	3/32 Hex Key	a.A.
7010-996	SFA Conversion Kit for 7010	a.A.
7010-997	RheBuild Kit w/Stator for 7010	a.A.
7010-998	pH Upgrade Kit for 7000 Series	a.A.
7010-999	RheBuild Kit for 7010/7000	a.A.
7012	Loop Filler Port, SS	a.A.
7012-009	Needle Port Fitting	a.A.
7020	5uL,SS,Sample Loop,20°	a.A.
7020-006	25uL,SS, Sample Loop,20°	a.A.
7021	10uL,SS,Sample Loop,20 Deg	a.A.
7022	20uL,SS,Sample Loop,20°	a.A.
7023	50uL,SS,Sample Loop,20°	a.A.
7024	100uL,SS,Sample Loop,20°	a.A.
7025	200uL,SS,Sample Loop,20°	a.A.
7026	500uL,SS,Sample Loop,20°	a.A.
7027	1mL,SS,Sample Loop,20Deg	a.A.
7028	2mL,SS,Sample Loop,20 Deg	a.A.
7029	5mL,SS,Sample Loop,20°	a.A.
7030	2/6,Manual,3WY,SS	a.A.
7030-003	Vespel Rotor Seal for 7030	a.A.
7030-014	VS Rotor Seal for 7030L	a.A.
7030-015	TZ Rotor Seal for 7030	a.A.
7030L	2/6,Manual,3WY,P,SS	a.A.
7040	2/6,MAN,4WY,SS	a.A.
7040L	2/6,MAN,4WY,P,SS	a.A.

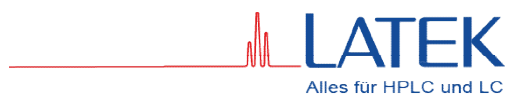
RHEODYNE Ersatzteil-Liste 2011



LATEK Labortechnik
Lilienthalstraße 13
69214 Eppelheim
Germany
Tel: +49 (0) 6221 760097
Fax: +49 (0) 6221 766479
Email: LATEK@t-online.de

Ersatzteil Nr.	Beschreibung	Preise
7060	6/7,Manual,SEL,SS	a.A.
7060-039	SS Stator for 7060	a.A.
7060-052	Fittings for 7060	a.A.
7060-064	VS Rotor Seal for 7060L	a.A.
7060-065	SS Stator for 7060L	a.A.
7060-067	TZ Rotor Seal for 7060L	a.A.
7060-070	VS Rotor Seal for 7060	a.A.
7060-074	TZ Rotor Seal for 7060	a.A.
7060-087	6/7,MAN,SEL,SS,w/oKnob &Detent	a.A.
7060L	6/7,Manual,SEL,P,SS	a.A.
7103-999	RheBuild Kit for HT710-213	a.A.
7112-999	RheBuild Kit, RV/EV/HT 7x0-112	a.A.
7113-999	RheBuild Kit for HT700-113	a.A.
7114-999	RheBuild Kit for HT700-114	a.A.
7116-999	RheBuild Kit for RV7X0-116	a.A.
7123-047	SS,Stator for RV/EV500-100	a.A.
7123-085	PK Stator for HT/RV650-100-X	a.A.
7123-127	PK Stator for RV/EV/HT750-X07	a.A.
7123-128	SS Stator for RV/EV/HT700-X07	a.A.
7123-142	SS Stator for RV/EV500-104	a.A.
7123-143	PK Stator for RV350-105	a.A.
7123-145	PK Stator for RV/EV550-104	a.A.
7123-147	PK Stator for RV/EV/HT550-X00	a.A.
7123-148	SS Stator for RV/EV500-101	a.A.
7123-149	PK Stator for RV/EV500-101	a.A.
7123-180	SS Stator for RV/EV/HT703-X00	a.A.
7123-221	PK Stator for RV/EV/HT753-X05	a.A.
7123-223	SS Stator	a.A.
7123-227	1uL Loop SFA for 7750/RV	a.A.
7123-269	SS Stator for RV700-116	a.A.
7123-270	PK Stator for RV750-116	a.A.
7123-390	SS Stator for RV200-102	a.A.
7123-403	SS Stator for MRA100-000	a.A.
7123-437	PK RS for Injector with Purge	a.A.
7123-493	RPC10 Rotor Seal,3 GRV, VHP	a.A.
7123-499	PK SFS for Injector with Purge	a.A.
7123-526	RPC10,Rotor Seal for VHP	a.A.
7123-548	Stator,6P,SS,MBB	a.A.

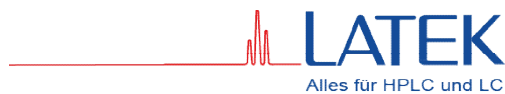
RHEODYNE Ersatzteil-Liste 2011



LATEK Labortechnik
Lilienthalstraße 13
69214 Eppelheim
Germany
Tel: +49 (0) 6221 760097
Fax: +49 (0) 6221 766479
Email: LATEK@t-online.de

Ersatzteil Nr.	Beschreibung	Preise
7123-550	SPC3,Stator,7 Port for VHP	a.A.
7123-559	SPC-1,Stator,6 Port,0.040"	a.A.
7123-568	UL Stator for HT715-102	a.A.
7123-569	Stator for HT600-100-4	a.A.
7125	2/6 Manual Injector, SS	a.A.
7125-008	Needle Guide	a.A.
7125-042	Thrust Bearing for 7125	a.A.
7125-043	Handle Assy for 7125	a.A.
7125-044	Stator Ring for 7125	a.A.
7125-047	Vespel Rotor Seal for 7125	a.A.
7125-054	Needle Port Cleaner	a.A.
7125-055	Parts for 7125	a.A.
7125-067	Stator Face Assy for 7125	a.A.
7125-079	TZ Rotor Seal for 7125	a.A.
7125-098	2/6,Manual,SYR,SS,SP Part	a.A.
7125-132	Needle Port Tube Assy	a.A.
7125-998	pH Upgrade Kit for 7125	a.A.
7125-999	RheBuild Kit for 7125	a.A.
7125TI-999	RheBuild Kit for 7125-081	a.A.
7150-999	RheBuild Kit for HT/MXT715-000	a.A.
7152-999	RheBuild Kit for HT/MXT715-102	a.A.
7153-999	RheBuild Kit for HT715-202	a.A.
7155-999	RheBuild Kit for HT715-105	a.A.
7160	Mounting Plate	a.A.
7160-010	Angle Mounting Plate	a.A.
7160-029	Ring Stand Valve Bracket	a.A.
7201	Syringe, Fixed Needle, 10uL	a.A.
7215	Needle, 22Ga Luer Tip	a.A.
7410-038	Rotor Seal for 7410	a.A.
7410-041	Stator for 7410/7413	a.A.
7410-070	Loop Disc,0.5uL for 7410	a.A.
7410-071	1uL Loop Disc for 7410	a.A.
7410-072	2uL Loop Disc for 7410	a.A.
7410-075	Tefzel Rotor Seal for 7410	a.A.
7410-999	RheBuild Kit for 7410	a.A.
7413-013	Vespel Rotor Seal for 7413	a.A.
7413-041	0.5-1-2uL Loop Disc for 7413	a.A.
7413-042	0.5-1-5uL Loop Disc for 7413	a.A.

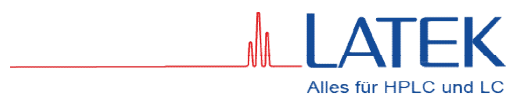
RHEODYNE Ersatzteil-Liste 2011



LATEK Labortechnik
Lilienthalstraße 13
69214 Eppelheim
Germany
Tel: +49 (0) 6221 760097
Fax: +49 (0) 6221 766479
Email: LATEK@t-online.de

Ersatzteil Nr.	Beschreibung	Preise
7413-043	1-2-5uL Loop Disc for 7413	a.A.
7501-999	RheBuild Kit for XX7x0-100	a.A.
7502-999	RheBuild Kit for RV7x0-102	a.A.
7507-999	RheBuild Kit, RV/EV/HT7X0-X07	a.A.
7520-011	0.2uL,Rotor,VS for 7520	a.A.
7520-012	0.5uL,Rotor, VS for 7520	a.A.
7520-013	1uL,Rotor,VS for 7520	a.A.
7520-030	Stator,Inlet for 7520	a.A.
7520-035	Stator,Outlet for 7520	a.A.
7520-999	RheBuild Kit for 7520	a.A.
7531-999	RheBuild Kit RV/EV/HT7x3-X00	a.A.
7650-002	SS Stator for 7650E	a.A.
7725	2/6,Manual,SYR,SS	a.A.
7725-009	Handle for 7725	a.A.
7725-010	Stator for 7725	a.A.
7725-026	CER,Stator Face, Assy for 7725	a.A.
7725-999	RheBuild Kit for 7725(I)	a.A.
7725I	2/6,MAN,SYR,SS,W/Pos Sensor	a.A.
7726-045	Sample Loading Adapter	a.A.
7739-005	2/6,AS,SV,SS,W/out pin	a.A.
7739-999	RheBuild Kit for 7739	a.A.
7750-012	Isolation Seal	a.A.
7750-016	VS Rotor Seal for 7750	a.A.
7750-027	CER Stator Face Seal,7750/XX7X	a.A.
7750-038	SS Stator for 7750/XX700-100	a.A.
7750-050	TZ Rotor Seal,7750/XX700-100	a.A.
7750-055	PK Rotor Seal,7750/XX700-100	a.A.
7750-057	PK Rotor Seal,7750,2 Groove	a.A.
7750-070	SS Stator,7750,W/90deg Stamp	a.A.
7750-079	SS Stator for 7750, VP	a.A.
7750-112	VS Rotor Seal,HT	a.A.
7750-121	VS Rotor Seal,7750,Ext Groove	a.A.
7750-176	VS Rotor Seal for 7800E	a.A.
7750-178	DL Stator for 7800E	a.A.
7750-179	PK Rotor Seal, Ext Grooves	a.A.
7750-199	DL Stator for 7860/RV860	a.A.
7750-200	VS Rotor Seal for 7860E	a.A.
77502-999	RheBuild Kit for 7750E-020	a.A.

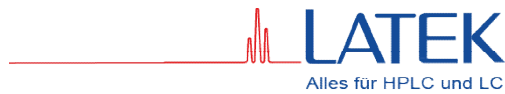
RHEODYNE Ersatzteil-Liste 2011



LATEK Labortechnik
Lilienthalstraße 13
69214 Eppelheim
Germany
Tel: +49 (0) 6221 760097
Fax: +49 (0) 6221 766479
Email: LATEK@t-online.de

Ersatzteil Nr.	Beschreibung	Preise
7750-999	RheBuild Kit for 7750 Series	a.A.
7753-001	VS Dbl 3-Way Rotor Seal	a.A.
7755-015	CER,SFS,7750,XX7000-100	a.A.
7755-017	25uL,SS,Sample Loop,30°	a.A.
7755-020	5uL,SS,Sample Loop,30 Degree	a.A.
7755-021	10uL,SS,Sample Loop,30 Degree	a.A.
7755-022	20uL,SS,Sample Loop,30°	a.A.
7755-023	50uL,SS,Sample Loop,30°	a.A.
7755-024	100uL,SS,Sample Loop,30°	a.A.
7755-025	200uL,SS,Sample Loop,30°	a.A.
7755-026	500uL,SS,Sample Loop,30°	a.A.
7755-027	1mL,SS,Sample Loop,30 Degree	a.A.
7755-028	2mL,SS,Sample Loop,30°	a.A.
7755-029	5mL,SS,Sample Loop,30°	a.A.
7755-142	20uL,SS,Sample Loop,30D,StdNut	a.A.
7755-149	5mL,SS,Sample Loop,30 D,StdNut	a.A.
7755-200	5uL,SS,Sample Loop,VHP	a.A.
7755-201	10uL,SS,Sample Loop,VHP	a.A.
7755-202	20uL,SS,Sample Loop,VHP	a.A.
7755-203	50uL,SS,Sample Loop,VHP	a.A.
7755-204	100uL,SS,Sample Loop,VHP	a.A.
7755-217	25uL,SS Sample Loop,VHP	a.A.
7755-226	500uL Sample Loop,VHP	a.A.
7755-227	1mL,SS Sample Sloop, VHP	a.A.
7770-003	Spanner for TitanHP 7-PORT	a.A.
7770-039	TitanEX Ferrule, 1/8", 25/Pkg	a.A.
7770-040	TitanEX Ferrule, 1/8",50/Pkg	a.A.
7770-041	TitanEX Ferrule, 1/8",100/Pkg	a.A.
7770-044	TitanEX Ferrule, 1/16" 25 Pkg	a.A.
7770-045	TitanEX Ferrule, 1/16",50/Pkg	a.A.
7770-046	TitanEX Ferrule, 1/16"100/Pkg	a.A.
7770-051	TitanEX Control Cable	a.A.
7770-052	Titan Demo Kit	a.A.
7770-067	TitanEX Driver PCB	a.A.
7770-079	Spanner for TitanHP™	a.A.
7770-124	O-Rings,1/16",MLP,MXX 25Pkg	a.A.
7770-229	DL Stator for VP MHP and POD	a.A.
7770-239	PCB,DRV, MHP7900/9900-500-1	a.A.

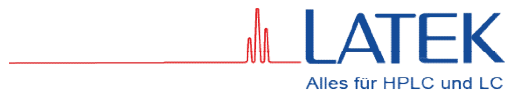
RHEODYNE Ersatzteil-Liste 2011



LATEK Labortechnik
Lilienthalstraße 13
69214 Eppelheim
Germany
Tel: +49 (0) 6221 760097
Fax: +49 (0) 6221 766479
Email: LATEK@t-online.de

Ersatzteil Nr.	Beschreibung	Preise
7770-240	PCB,Driver, MHP7960/9960-500-1	a.A.
7770-241	PCB,DRVVR,Assy,10P,TitanEX	a.A.
7770-257	PCB,DRVVR,6POS BCD,1X REDUCT	a.A.
7770-258	PCB,DRVVR,10POS BCD,1X REDUCT	a.A.
7770-261	Actuator,TitanHT,36/60°	a.A.
7770-263	Actuator,TitanHT™, 22.5°	a.A.
7770-352	Actuator,TitanHT,36/60°,4 Lead	a.A.
777201-999	CAM for MLP777-201/601	a.A.
777203-999	CAM for MLP777-x03/613	a.A.
777205-999	CAM for MLP777-205/605	a.A.
777206-999	CAM for MLP777-206/606	a.A.
777212-999	CAM for MLP777-212/612	a.A.
777215-999	CAM for MLP777-215/615	a.A.
777216-999	CAM for MLP777-216/616	a.A.
777224-999	CAM for MLP777-224/624	a.A.
777225-999	CAM for MLP777-225/625	a.A.
777405-999	CAM for MLP777-405/805	a.A.
778205-999	CAM for MLP778-205/605	a.A.
778206-999	CAM for MLP778-206/606	a.A.
778207-999	CAM for MLP778-207/607	a.A.
7800-999	RheBuild Kit for 7800E	a.A.
7860-999	RheBuild Kit for 7860E	a.A.
7900-000	2/6,MV,SV,SS	a.A.
7900-107	SS Stator for XXX-7900-XXX	a.A.
7900-146	PK Stator for XXX9900-XXX	a.A.
7900-179	Stator,Plated for MHP7900	a.A.
7900-183	Stator,Plated for MHP7970	a.A.
7900-187	VS Rotor Seal for MHP7970	a.A.
7900-901	Power Adapter for TitanEX™	a.A.
7900-999	RheBuild Kit for MV7900-XXX	a.A.
7910-004	PK Needle Port	a.A.
7913-999	RheBuild Kit,MHP7913/PD7913	a.A.
7920-999	RheBuild Kit MHP & PD7900/792X	a.A.
7925-002	SS Stator 6P,063/10,1032,,LP,	a.A.
7960-002	SS Stator for 10P MV	a.A.
7960-014	SPC1 Stator for MHP7960-XXX-X	a.A.
7960-999	RheBuild Kit for 7960-x00	a.A.
7961-999	RheBuild Kit, MHP7960-XXX-X	a.A.

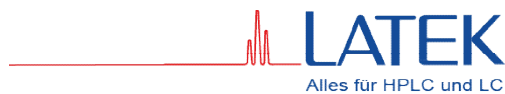
RHEODYNE Ersatzteil-Liste 2011



LATEK Labortechnik
Lilienthalstraße 13
69214 Eppelheim
Germany
Tel: +49 (0) 6221 760097
Fax: +49 (0) 6221 766479
Email: LATEK@t-online.de

Ersatzteil Nr.	Beschreibung	Preise
7970-999	RheBuild Kit,MHP7970/PD7970	a.A.
7980-004	DL Stator for 7980	a.A.
79801-999	RheBuild Kit forMHP/PD/MXP7980	a.A.
7980-999	RheBuild Kit for 7980	a.A.
7984-005	DL,Stator for 7984-000	a.A.
7984-999	RheBuild Kit for 7984	a.A.
7986-004	DL,Stator for 7986	a.A.
79861-999	RheBuild Kit forMHP/PD/MXP7986	a.A.
7986-999	RheBuild Kit for 7986	a.A.
8010-016	SS Stator for 8010	a.A.
8020	5uL SS Loop for 8125/8126	a.A.
8021	10uL SS Loop for 8125/8126	a.A.
8022	20uL SS Loop for 8125/8126	a.A.
8023	50uL SS Loop for 8125/8126	a.A.
8125	2/6 Syringe Load Micro Inj, SS	a.A.
8125-035	Shaft for 8125/8126	a.A.
8125-038	VS Rotor Seal for 8125/8126	a.A.
8125-059	Pos. Sensor for 8125	a.A.
8125-074	Ceramic SFA for 8125	a.A.
8125-084	0.5mm Ferrule for 8125	a.A.
8125-086	0.5mm Ferrule for 8125,4/Pkg	a.A.
8125-094	Ceramic SFA for 9010	a.A.
8125-095	2/6 Syr Load Micro, TZ RS	a.A.
8125-097	TZ Rotor Seal for 8125/8126	a.A.
8125-108	Pos. Sensor Cord	a.A.
8125-119	PEEK Rotor Seal for 8125	a.A.
8125-999	RheBuild Kit for 8125/8126	a.A.
8382-102	PCB for TitanHT 10 Position	a.A.
8382-103	PCB for TitanHT 6 Position	a.A.
8382-104	PCB for TitanHT 2 Pos 10 Port	a.A.
8382-105	PCB for TitanHT 2 Pos 6 Port	a.A.
8382-106	PCB for TitanHT 2/6 Non-Stnd	a.A.
8382-107	PCB for TitanHT 8 Position	a.A.
8382-108	PCB for TitanHT,2/6,VHP,INJ	a.A.
8382-111	PCB,TitanHT,6Position,2CBCD	a.A.
9010	2/6 Manual Switch,PK	a.A.
9010-018	Pos Sensor for 7725i /9010/	a.A.
9010-040	Fittings for 9010/9125	a.A.
9010-051	Tefzel Rotor Seal for 9010	a.A.
9010-061	Tefzel RS for 9010, .015" Grv	a.A.

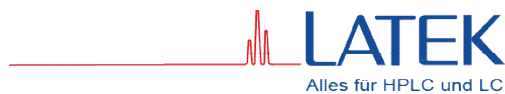
RHEODYNE Ersatzteil-Liste 2011



LATEK Labortechnik
Lilienthalstraße 13
69214 Eppelheim
Germany
Tel: +49 (0) 6221 760097
Fax: +49 (0) 6221 766479
Email: LATEK@t-online.de

Ersatzteil Nr.	Beschreibung	Preise
9010-065	PEEK Rotor Seal for 9010	a.A.
9010-096	2/6 Manual,2ul Int Loop	a.A.
9010-999	RheBuild Kit for 9010/9040	a.A.
9012	Loop Filler Port, PEEK	a.A.
9013	Needle Port, PEEK	a.A.
9030	2/6 Man Dbl 3-Way,PEEK	a.A.
9055-020	5uL PEEK Sample Loop	a.A.
9055-021	10uL PEEK Sample Loop	a.A.
9055-022	20uL PEEK Sample Loop	a.A.
9055-023	50uL PEEK Sample Loop	a.A.
9055-024	100uL PK Sample Loop	a.A.
9055-025	200uL PEEK Sample Loop	a.A.
9055-026	500uL PK Sample Loop	a.A.
9055-027	1mL PK Sample Loop	a.A.
9055-028	2mL PEEK Sample Loop	a.A.
9055-029	5mL PK Sample Loop	a.A.
9055-033	10mL PEEK Sample Loop	a.A.
9060	6/7,Manual Selector,PEEK	a.A.
9060-015	Stator Face Assy for 9060	a.A.
9060-016	PK Stator for 9060	a.A.
9060-073	PK Stator Face Seal for 9060	a.A.
9125	2/6 Man Syr Load Inj,PEEK	a.A.
9125-043	PEEK Stator for 9125	a.A.
9125-055	Parts for 9125	a.A.
9125-076	Needle Adapter for 9125/9126	a.A.
9125-082	Tefzel Rotor Seal for 9125	a.A.
9125-087	2/6 Syr Load Inj,Low Disp,PK	a.A.
9125-095	PEEK Rotor Seal for 9125	a.A.
9125-121	2/6 Syr Load Inj,PEEK,2ul Loop	a.A.
9125-123	Needle Port Tube Assy	a.A.
9125-999	RheBuild Kit for 9125/9126	a.A.
9650-009	PEEK Stator for 9650E	a.A.
9650-015	PK Rotor Seal for 7650/9650	a.A.
9650-999	RheBuild Kit for 7650/9650	a.A.
9700-999	RheBuild Kit for 9700	a.A.
9710-035	VS Rotor Seal for 9710-050	a.A.
9710-060	2/6 A/S Inj, PK w/Spcl Adj.	a.A.
9725	2/6 Syr Load Inj, w/MBB, PK	a.A.
9725-015	Parts for 9725 and 9725I	a.A.

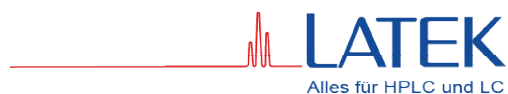
RHEODYNE Ersatzteil-Liste 2011



LATEK Labortechnik
 Lilienthalstraße 13
 69214 Eppelheim
 Germany
 Tel: +49 (0) 6221 760097
 Fax: +49 (0) 6221 766479
 Email: LATEK@t-online.de

Ersatzteil Nr.	Beschreibung	Preise
9725-999	RheBuild Kit for 9725/9725I	a.A.
9725I	2/6 Syr Load Inj w/ Pos Sensor	a.A.
9740-001	2/6 A/S,Peek,w/ Drive Pin	a.A.
9740-020	Parts for 9740-001	a.A.
9750-021	PK Stator for 9750/9740	a.A.
9750-999	RheBuild Kit for 9750/9740	a.A.
9925-002	PEEK Stator for 9925-x00	a.A.
9960-002	PK Stator for MV,MHP,PD	a.A.
EV500-100	EV 3-COL SEL, SS	a.A.
EV500-101	EV 2 Chnl SEL, SS	a.A.
EV500-101-S2	EV,2CH SEL,SS,W/ RS-232	a.A.
EV500-104	EV,6 COL SEL,SS	a.A.
EV501-100	EV Low Pro 3-Col Sel, SS	a.A.
EV501-104	EV Low Pro 6-Col Sel, SS	a.A.
EV550-100	EV 3 Col Sel, PEEK	a.A.
EV550-101	EV 2 Chnl Sel,PEEK	a.A.
EV550-104	EV 6-Col Sel, PEEK	a.A.
EV551-100	EV Low Pro 3-Col Sel, PK	a.A.
EV551-104	EV Low Pro 6-Col Sel, PK	a.A.
EV700-100	EV 2/6 Inj, SS	a.A.
EV700-100-S2	EV 2/6 Inj, SS w/RS-232	a.A.
EV700-102	EV 2/10 Switch,SS	a.A.
EV700-102-S2	EV,2/10,SS,w/ RS-232	a.A.
EV700-104	2/6,EV,3WY,SS	a.A.
EV700-105	6/7,EV,Sel,SS	a.A.
EV700-107	10/11,EV,Sel,SS	a.A.
EV700-112	2/6,EV,Lrg Bore,SS	a.A.
EV750-100	2/6, EV,Inj,PK	a.A.
EV750-100-S2	EV 2/6 Inj, PK w/RS-232	a.A.
EV750-102	EV,2/10,PK	a.A.
EV750-102-S2	EV,2/10,PK,w/RS-232	a.A.
EV750-105	EV 6/7 Sel Vlv,PEEK	a.A.
EV750-107	10/11,EV, Sel,PEEK	a.A.
EV750-112	2/6,EV, Lrg Bore,PEEK	a.A.
EZ450-000	4/5,TitanEZ,SEL,CER	a.A.
EZ450-000-4	4/5TitanEZ,SEL,CER,PCB	a.A.
EZ450-900	4/5,TitanEZ,SEL,CER,PK	a.A.
EZ450-900-4	4/5TitanEZ,SEL,CER,PK,PCB	a.A.
HT700-107	10/11,TitanHT,SEL,SS	a.A.
HT700-112	2/6,TitanHT,SEL,SS	a.A.

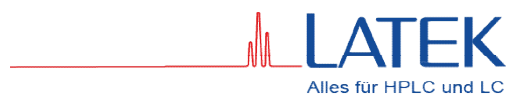
RHEODYNE Ersatzteil-Liste 2011



LATEK Labortechnik
 Lilienthalstraße 13
 69214 Eppelheim
 Germany
 Tel: +49 (0) 6221 760097
 Fax: +49 (0) 6221 766479
 Email: LATEK@t-online.de

Ersatzteil Nr.	Beschreibung	Preise
HT700-113	2/6,TitanHT,INJ,DL,VS,1/16"	a.A.
HT700-114	2/6,TitanHT,INJ,SPC1,PK	a.A.
HT703-100	3/7,TitanHT,LIP,SS	a.A.
HT710-000	2/6,TitanHT,SV,UL	a.A.
HT710-000-1	Kit,2/6,TitanHT,SV,UL,PCB	a.A.
HT710-102	2/10,TitanHT,SV,UL	a.A.
HT710-102-1	2/10,TitanHT,SV,UL,PCB	a.A.
HT710-105	6/7,TitanHT,SEL,VHP,UL	a.A.
HT710-105-6	KIT,6/7,TitanHT,SEL,VHP,UL,PCB	a.A.
HT710-213	6/7,TitanHT,SP,SEL,UL	a.A.
HT715-000	2/6,THT,VHP,UL	a.A.
HT715-102	2/10,TitanHT,SV,UL	a.A.
HT715-105	6/7,TitanHT,SEL,VHP,UL	a.A.
HT715-121	2/6,TitanHT,INJ,VP,UL	a.A.
HT715-202	2/10,TitanHT,SV,SPC3,RPC13	a.A.
HT715-221	2/6,TitanHT,INJ,VP,SPC3,RPC13	a.A.
HT750-107	10/11,TitanHT,SEL,PEEK	a.A.
HT750-112	2/6,TitanHT,SV,PK	a.A.
HT753-100	3/7,TitanHT,LIP,PEEK	a.A.
MHP7900-000	2/6,TitanHP,DL	a.A.
MHP7900-500-1	2/6,TitanHP,DL,W/PCB LEVEL	a.A.
MHP7907-000	2/6,TitanHP,INJ,DL,CND	a.A.
MHP7920-000	2/6,TitanHP VP,DL	a.A.
MHP7920-500-1	2/6,TitanHP,DL,VP,Port,W/PCB LVL	a.A.
MHP7920-500-2	2/6,TitanHP,DL,VP,W/PCB DPLs	a.A.
MHP7920-500-3	2/6,TitanHP,V Port w/PCB BCD	a.A.
MHP7960-000	2/10,TitanHP,SS	a.A.
MHP7960-500-1	2/10,TitanHP,SS,W/PCB Level	a.A.
MHP7970-000	6/7,TitanHP,SEL,DLII,1/16"	a.A.
MHP7970-500-1	6/7,TitanHP,SEL,Ti,PCB	a.A.
MHP7980-000	2/6,TitanHP,Nano,Ti,no PCB	a.A.
MHP7980-500-1	2/6,TitanHP,Nano,Ti,w/PCB LVL	a.A.
MHP7986-000	2/10,TitanHP,Nano,Ti,no PCB	a.A.
MHP7986-500-1	2/10,TitanHP,Nano,Ti,w/PCB LVL	a.A.
MHP9900-000	2/6,TitanHP,SEL,PEEK	a.A.
MHP9900-500-1	2/6,TitanHP,PK,W/PCBLEVEL	a.A.
MHP9960-000	2/10,TitanHP,PEEK	a.A.
MHP9960-500-1	2/10,TitanHP,PK,W/PCB LEVEL	a.A.
MLP777-201	2/6,TitanEX,RPC7,1/16"	a.A.
MLP777-203	2/6,TitanEX 3WY,RPC7	a.A.

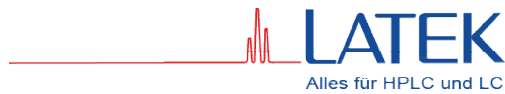
RHEODYNE Ersatzteil-Liste 2011



LATEK Labortechnik
 Lilienthalstraße 13
 69214 Eppelheim
 Germany
 Tel: +49 (0) 6221 760097
 Fax: +49 (0) 6221 766479
 Email: LATEK@t-online.de

Ersatzteil Nr.	Beschreibung	Preise
MLP777-205	6/7 TitanEX Sel, RPC7, 1/16"	a.A.
MLP777-206	6/7 TitanEX Sel, RPC7, 1/8"	a.A.
MLP777-212	2/6 TitanEX , RPC7, 1/8"	a.A.
MLP777-216	6/7 TitanEX Sel. RPC7, 1/8"	a.A.
MLP777-224	6/6 TitanEX, 1/8", RPC7	a.A.
MLP777-601	2/6, TitanEX, SV, RPC7, 1/16", PCB	a.A.
MLP777-603	2/6 TitanEX, 3WY, RPC7	a.A.
MLP777-605	6/7 TitanEX, 1/16" RPC-7, W/PCB	a.A.
MLP777-606	6/7 TitanEX SEL, RPC7	a.A.
MLP777-612	2/6 TitanEX, 3GRV, .060, 1/8"	a.A.
MLP777-615	6/7, TitanEX, SEL, RPC7, 1/16", PCB	a.A.
MLP777-616	6/7 TitanEX, RPC-7, 1/8"	a.A.
MLP777-624	6/6, TitanEX, SP, KF, UM, w/PCB	a.A.
MLP777-625	6/7, TitanEX, SEL, INJ, W/PCB	a.A.
MLP777-656	6/7 TitanEX, 1/8", RPC7, Lock Con	a.A.
MLP777-805	6/7, TitanEX, 450HP, 1/16", PCB	a.A.
MLP778-205	10/11 TitanEX SEL, RPC7, 1/16"	a.A.
MLP778-206	10/11 TitanEX SEL, RPC7, 1/8"	a.A.
MLP778-207	2/10, TITANEX, SV, RPC7, 1/16"	a.A.
MLP778-605	10/11, TitanEX, SEL, RPC7, 1/16",	a.A.
MLP778-606	10/11, TitanEX SEL, RPC7, 1/8" PCB	a.A.
MLP778-607	2/10, TitanEX, SV, RPC7, 1/16", PCB	a.A.
MRA100-000	6/4, MRA, SV, SS	a.A.
MRA1-999	RheBuild Kit for MRA100-000	a.A.
MXP7900-000	2/6, MX, TitanHP™, DL	a.A.
MXP7920-000	2/6, MX TitanHP™, VP, DL	a.A.
MXP7960-000	2/10, MX, TitanHP™, SS	a.A.
MXP7970-000	6/7, MX, TitanHP™, DLII	a.A.
MXP7980-000	2/6, MX, TitanHP™, Nano, Ti	a.A.
MXP7986-000	2/10, MX, TitanHP™, Nano, Ti	a.A.
MXP9900-000	2/6, MX, TitanHP, SEL, PK	a.A.
MXP9960-000	2/10, MX, TitanHP, PK	a.A.
MXT715-000	2/6, MX, TitanHT, VHP, UL	a.A.
MXT715-102	2/10, MX, TitanHT, VHP, UL	a.A.
MXT715-105	6/7, MX TitanHT, SEL, UL	a.A.
MXX777-601	2/6, MX, TitanEX, SV, RPC7, 1/16"	a.A.
MXX777-603	2/6, MX, TitanEX, 3WY, RPC7	a.A.
MXX777-605	6/7, MX, TitanEX, RPC7, 1/16"	a.A.
MXX777-612	2/6, MX, TitanEX, 3GRV, .060, 1/8"	a.A.
MXX777-616	6/7, MX, TitanEX, RPC7, 1/8"	a.A.

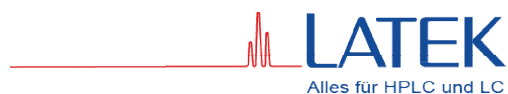
RHEODYNE Ersatzteil-Liste 2011



LATEK Labortechnik
 Lilienthalstraße 13
 69214 Eppelheim
 Germany
 Tel: +49 (0) 6221 760097
 Fax: +49 (0) 6221 766479
 Email: LATEK@t-online.de

Ersatzteil Nr.	Beschreibung	Preise
MXX778-605	10/11,MX,TitanEX,SEL,RPC7,1/16	a.A.
PD700-107	10/11,TitanHT,Pod,SEL,SS	a.A.
PD700-112	2/6,TitanHT,PD,SV,SS,PK	a.A.
PD700-113	2/6,TitanHT, Pod,SEL,DL	a.A.
PD703-100	3/7,THT,POD,LIP,SS	a.A.
PD710-000	2/6,TitanHT,Pod,SV,UL	a.A.
PD710-102	2/10,TitanHT,SV,PD,UL,RP	a.A.
PD710-105	6/7,TitanHT,POD,SEL,UL	a.A.
PD710-112	2/10,TitanHT,SV,PD,ULII	a.A.
PD710-213	6/7,TitanHT,Pod,SP,SEL,UL	a.A.
PD715-000	2/6,TitanHT,Pod,SEL,UL	a.A.
PD715-102	2/10,TitanHT,PD,SV,UL	a.A.
PD715-105	6/7,TitanHT,Pod,SEL,UL	a.A.
PD715-121	2/6,TitanHT,PD,INJ,VP,UL	a.A.
PD715-202	2/10,TitanHT,PD,SV,SPC3,RPC13	a.A.
PD715-221	2/6,TitanHT,POD,VP,SPC3,RPC13	a.A.
PD750-107	10/11,TitanHT, Pod,SEL,PK	a.A.
PD750-112	2/6,TitanHT,Pod,SV,PEEK	a.A.
PD753-100	3/7,TitanHT,Pod,LIP,PK	a.A.
PD7900	2/6 TitanHP Pod,SV,DL	a.A.
PD7913	6/7,TitanHP,Pod,DLII	a.A.
PD7920	2/6 TitanHP Pod,DL,VP	a.A.
PD7960	2/10,TitanHP Pod,SEL,DL	a.A.
PD7970	6/7,TitanHP,Pod,SEL,CP,DL2	a.A.
PD7980	2/6,TitanHP,Nano,Pod	a.A.
PD7986	2/10,TitanHP,Nano,Pod	a.A.
PD9900	2/6,TitanHP,Pod,Peek	a.A.
PD9960	2/10 TitanHP,Pod,Peek	a.A.
RV500-100	3 Column Sel. RV,SS	a.A.
RV500-104	6 Col Selector RV, SS	a.A.
RV550-100	3 Column Selector RV, PK	a.A.
RV550-101	2 Col Sel w/ Bypass RV, PK	a.A.
RV550-104	6 Col Selector RV, PK	a.A.
RV700-100	2/6 RV Switching Valve, SS	a.A.
RV700-102	2/10 RV Switching Valve, SS	a.A.
RV700-104	2/6,RV,3WY	a.A.
RV700-105	6/7,RV,SEL,SS,PK/PK	a.A.
RV700-107	10/11, RV Selector,SS,	a.A.
RV700-112	2/6,RV,Semi-Prep Switching,SS	a.A.
RV700-114	2/6 RV,V Port,Injector,SS	a.A.

RHEODYNE Ersatzteil-Liste 2011



LATEK Labortechnik
Lilienthalstraße 13
69214 Eppelheim
Germany
Tel: +49 (0) 6221 760097
Fax: +49 (0) 6221 766479
Email: LATEK@t-online.de

Ersatzteil Nr.	Beschreibung	Preise
RV700-116	12/13 RV Selector,SS	a.A.
RV700-136	2/6 RV Inj,SS Set 6000psi	a.A.
RV703-100	3/7, RV Injector w/ Purge,SS	a.A.
RV750-100	2/6 RV Switching Valve,PEEK	a.A.
RV750-102	2/10 RV Switching Valve, PK	a.A.
RV750-105	6/7,RV,SEL,PK,PK/PK	a.A.
RV750-107	10/11 RV Selector,PEEK	a.A.
RV750-112	RV,2/6,Semi-Prep Switching,PK	a.A.
RV750-116	12/13 RV Selector,PEEK	a.A.
RV750-132	10/11 RV Sel,PK w/Parts	a.A.